

asprs



SW Region-AZ/NV/SoCA

RapidEye Reboots Itself Under Iunctus Geomatics

On June 2, 2011, Wolfgang Biedermann, CEO of RapidEye AG announced that RapidEye AG had filed for the equivalent of Chapter 11 protection under German law after defaulting on several loan covenants.

RapidEye AG, which forged the way in the privatization of earth sensing satellite operations with its five smallsat constellation was overcome by its debt burden and suffered disappointing sales in 2010 before a modest upswing in 2011.

On September 1, 2011, RapidEye Canada Ltd. a subsidiary of Iunctus Geomatics, the parent company of TerraEngine, in Lethbridge, AB, Canada emerged as the successful buyer, acquired the assets of RapidEye AG. Iunctus CEO Ryan Johnson says that RapidEye Canada will operate as an independent company and announced the return of Wolfgang Krischke, co-founder of RapidEye to the management team.

Shortly after the acquisition, Iunctus announced the award of an 18 month IDIQ contract from NGA with a potential value of \$4.5 million (US). *(Compiled from RapidEye AG & Iunctus Geomatics sources)*



Note:
**Daylight Savings
Time Ends:**

**November 6, 2011 @ 2:00 AM
Set Clocks Back 1 Hour**

Why Your ASPRS Membership Matters...

ASPRS remains a vibrant and important society through the activities and advocacy of its membership. Membership in ASPRS as in any society comes with implicit responsibilities of the membership, that is, to be active, to participate, to engage, to challenge, to collaborate and to share.

By the same token, the Society understands its responsibility to advance the interests of its membership, to advocate on their behalf, to support technical and leadership development in the industry, and to provide opportunities to collaborate and share by hosting local, regional and national meetings and workshops. ASPRS actively promotes opportunities to continue professional development by providing focused training and workshops. ASPRS has developed recognized standards for certification as professional practitioners in geospatial science and remote sensing. ASPRS has an educational goal, supporting student organizations and scholarship opportunities at colleges and universities across the country.

Cynthia Wallace, the Immediate Past President of the Southwest Region of ASPRS, recently compiled her "Top 10" reasons to join (or re-join) the Society. From her list, #3 is "[ASPRS has] A Long History. An organization established 76

years ago, firmly established and fiscally strong, with a history that reflects the excitement, relevance and dynamic evolution of this technological field."

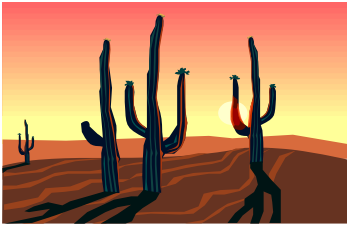
In the following brief video clip, your colleagues discuss the value proposition for ASPRS membership.



The long term viability and success of your Society depends on your commitment to actively participate and engage in its future.

If you have let your membership lapse, please consider re-joining. Many employers actively support the professional development of their employees by supporting membership and participation in ASPRS. ASPRS also offers programs for those members suffering financial hardship, to support their ongoing participation.

If you have recently joined or re-joined, Thank You. Through your commitment and participation ASPRS will remain an important and valuable resource long into the future.



Where Do You Stand on ASPRS Certification?

ASPRS supports professional certification at the following levels of practice:

- **Certified Photogrammetrist**
- **Certified Mapping Scientist - Remote Sensing**
- **Certified Mapping Scientist - GIS/LIS**
- **Certified Photogrammetric Technologist**
- **Certified Remote Sensing Technologist**
- **Certified GIS/LIS Technologist**

Applicants must successfully complete two criteria to become certified:

- **Pass a Peer-Review of experience and training, and**
- **Pass the Written Examination for the Specialty Area**

Consider enhancing your professional credentials. Look [here](#) for more info.

Help!



Calling all SW Region detectives...At the recent ASPRS Meeting in Milwaukee, I was approached by a gentleman, I believe a retired USGS staff member, about scanning historical aerial imagery of the Grand Canyon. Unfortunately, I did not get his contact information to follow-up. If anyone might know this gentleman and have his contact information, please forward it to the attention of the [Editor](#). Thanks.

SDSU Student Chapter To Host Spring Technical Meeting

The SDSU Student Chapter of ASPRS announces its plans for a 1/2 day technical meeting at the SDSU Department of Geography in April 2012. The meeting, organized and hosted by the SDSU student chapter is co-sponsored by SDSU and the SW Region of ASPRS. The keynote speaker will be the current ASPRS National Vice President Dr. Steven DeGloria. More information and a detailed program will be available shortly.

2012 ASPRS SW Region Student Awards

The SW Region of ASPRS is pleased to announce its competition for the Student Academic Achievement and Student Travel Awards for 2012 National ASPRS Conference in Sacramento, CA in 2012. As in prior years, the Region is funding up to two (2) Graduate and two (2) Undergraduate awards in areas of imagery-based academics and GIS-based academic programs. In order to qualify for the awards, students must be enrolled in a full or part time degree-granting academic program related to imagery or GIS; be a member of ASPRS at the time of the application, and be located within the SW Region (SoCAL, AZ, NV). All submittals will be electronic and students are encouraged to apply for all awards they qualify for. Application materials are available at the SW Region website.

[Application Deadline February 10, 2012](#)

Introducing: GPSi Corporation Aerial Survey and Mapping, Costa Mesa, CA...



Born of distinguished corporate parents, GEOspatial Professional Solutions Inc. (<http://www.gpsi-corp.com/default.asp>) traces its roots back to the 1970s. GPSi features the next generation of geospatial solutions that encompass photogrammetry, remote sensing and geographic information systems. GPSi is a one-stop resource that offers the best of both worlds: a 27-year legacy of high quality service and robust client base coupled with a **certified small woman-owned minority (WMBE) business**. GPSi is proud to be the only Southern California-based mapping company to offer the UltraCamLp, the digital aerial mapping camera tailored for high accuracy, design grade engineering mapping. With features like 64 megapixel image format, a 1:2.2 pan sharpen ratio that collects PAN, RGB and NIR in parallel, and forward motion compensation by TDI, this camera delivers the same technical capabilities of larger models. It is ideal for large scale mapping projects, high-resolution orthophoto production, precision photogrammetry, corridor mapping, and LiDAR integration.

See your name here: Send your 250 word profile to Editor@SWASPRS

Published and distributed by the US SW Region ASPRS, 2011 All Rights Reserved

[Unsubscribe from the Newsletter Mailing List](#)