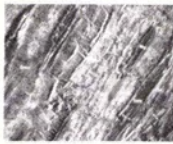


COVER PHOTO



The cover illustration is a synthetic aperture, side-looking airborne radar (SLAR), 1:250,000-scale image mosaic of a part of the Cumberland 1° x 2° quadrangle that has been superimposed on an equivalent part of the 1968 State Geologic Map of West Virginia (also at a scale of 1:250,000) and photographed using a backlighted source of illumination. The SLAR image was acquired in 1982 using the Goodyear radar system.

The area shown is part of the Valley and Ridge province and is centered on Moorefield, West Virginia. The physiographic information provided by the radar image (drainage, fracture patterns, and discontinuities in bedding traces), combined with the color-coded stratigraphic information from the geologic map (see Table 1, page 1467), aids in the correlation of similar structures as well as identification of anomalous geologic trends.

The cover image was produced by C. Scott Southworth and Howard A. Pohn, U.S. Geological Survey (USGS). The State Geologic Map of West Virginia was used with permission of the West Virginia Geological and Economic Survey. For information on this image and the USGS' SLAR program, see pages 1467-1470.

Second-class postage paid at Falls Church, Virginia and at additional mailing offices.

Photogrammetric Engineering and Remote Sensing (ISSN 0099-1112) is published monthly by the American Society of Photogrammetry, 210 Little Falls Street, Falls Church, Virginia 22046. Publication Office—The Sheridan Press, Hanover, Pa. 17331. (Also see Notice on second following page.)

Copyright 1984 by the American Society of Photogrammetry. Reproduction of this issue or any part thereof (except short quotations for use in the preparation of technical and scientific papers) may be made only after obtaining the specific approval of the Editor.

The Society is not responsible for any statements made or opinions expressed in the technical papers, advertisements, or other portions of this Publication.

PHOTOGRAMMETRIC ENGINEERING & REMOTE SENSING



Volume L

October 1984

Number 10

- Evaluation of the National Archives Program to Convert Nitrate Aerial Photographs of the United States to a Stable-Base Safety Film
Richard S. Williams, Jr., Thomas R. Lyons, Jane G. Ferrigno, and Michael C. Quinn1437
- A Parallel Case of Photogrammetry and its Application in Narrow Transits
Fouad A. Ahmed1443
- Pointing Precisions on Aerial Photography
J. C. Trinder1449
- The Side-Looking Airborne Radar Program of the U.S. Geological Survey
C. Scott Southworth1467
- Multisensor Data Analysis of Urban Environments
Barry N. Haack1471
- The Identification of Irrigated Crop Types and Estimation of Acreages from Landsat Imagery
Kenneth E. Kolm and H. Lee Case, III1479
- Determining the Confidence Level for a Classification
I. L. Thomas and G. McK. Allcock1491
- An Estimate of the Number of Boundary Cells in a Mapped Landscape Coded to Grid Cells
P. F. Crapper1497
- NEWSLETTER1513
- PROFESSIONAL PLACEMENT1511
- ENGINEERING REPORTS1505
- SHORT COURSES, GEORGE WASHINGTON UNIVERSITY
- CONTINUING ENGINEERING EDUCATION1448
- THE PHOTOGRAMMETRIC SOCIETY, LONDON1462
- BOOK REVIEW, *Man on Earth*1463
- BOOK REVIEW, *Remote Sensing in Geological Sciences*1464
- BOOK REVIEW, *Map Projection Methods*1464
- CALL FOR PAPERS, ELEVENTH INTERNATIONAL SYMPOSIUM ON MACHINE PROCESSING OF REMOTELY SENSED DATA1465

(Continued on page 1397)

MEMBERSHIP RATES: Membership in the American Society of Photogrammetry is open to any person actively engaged in the practice of Photogrammetry, Photointerpretation and Remote Sensing, or who by means of education or profession is interested in the application or development of these arts and sciences. The annual dues for Regular members are \$40.00 which includes a \$20.00 member subscription to the Society's official journal, *Photogrammetric Engineering and Remote Sensing*. The annual dues for accredited student members are \$15.00 which includes an \$8.00 student subscription to the official journal. (All memberships are on a calendar year basis.) Add \$5 for all international memberships to cover cost of postage. Postmaster: send address changes to the American Society of Photogrammetry, 210 Little Falls Street, Falls Church, Virginia 22046.

SUBSCRIPTION RATES: Persons or organizations that are not affiliated with the Society may obtain non-member subscriptions to *Photogrammetric Engineering and Remote Sensing* in accordance with the following schedule:

Non-member subscription . . .
\$65.00 per year (calendar)
Add \$5 for international subscriptions.

Printed in the United States of America.

Permission to Photocopy

The appearance of the code at the bottom of the first page of an article in this journal indicates the copyright owner's consent that copies of the article may be made for personal or internal use or for the personal or internal use of specific clients. This consent is given on the condition, however, that the copier pay the stated per copy fee of \$2.25 through the Copyright Clearance Center, Inc., 21 Congress Street, Salem, MA 01970, for copying beyond that permitted by Sections 107 or 108 of the U.S. Copyright Law. This consent does not extend to other kinds of copying, such as copying for general distribution, for advertising or promotional purposes, for creating new collective works, or for resale.

OPTICAL SCIENCE & ENGINEERING SHORT COURSE ..	1465
CALL FOR PAPERS: VIII NATIONAL CONGRESS ON PHOTOGRAMMETRY, PHOTOINTERPRETATION AND GEODESY, MEXICO	1510

SOCIETY AFFAIRS

Officers of the Society	1399
Sustaining Members	1403
Multilingual Dictionary of Remote Sensing and Photogrammetry	1425
ASP Postal Souvenir	1442
<i>Manual of Remote Sensing</i> , Second Edition	1466
New Sustaining Member, <i>Finnmap Oy</i> ..	1478
New Sustaining Member, <i>The Magnavox Marine and Survey Systems Division</i> ..	1478
ASP Publications	1519
President's Page	1520

JOURNAL AFFAIRS

Permission to Photocopy	1397
Index to Advertisers	1401
What <i>Photogrammetric Engineering and Remote Sensing is</i>	1401
Forthcoming Articles	1441
Erratum	1477
Instructions to Authors	1504
Journal Staff	1504

NOTICE: Correspondence relating to all business and editorial matters pertaining to this and other Society publications should be directed to the American Society of Photogrammetry, 210 Little Falls Street, Falls Church, VA 22046, including inquiries, memberships, subscriptions, changes in address, manuscripts for publication, advertising, back issues, and the *MANUALS OF PHOTOGRAMMETRY AND REMOTE SENSING*. The telephone number of the Society Headquarters is (703) 534-6617.