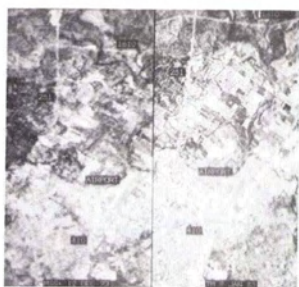


COVER PHOTO



A comparison of MSS 80 meter resolution data on the left (taken December 12, 1973) and 30 meter Thematic Mapper data on the right (taken January 9, 1983). The images, at a scale of approximately 1:63,000, are of northern San Antonio, Texas, and show the difference in spatial resolution between the two sensors and the growth of urbanization in a decade.

Traditional red-green-blue encoding was used for color, along with a sharpened intensity component. The image was produced on a LogE/ISI EARTHVIEWS system in the Center for Remote Sensing and Energy Research at Texas Christian University by Director Ken Morgan and Research Associate Dave Koger.

Second-class postage paid at Falls Church, Virginia and at additional mailing offices.

Photogrammetric Engineering and Remote Sensing (ISSN 0099-1112) is published monthly by the American Society for Photogrammetry and Remote Sensing, 210 Little Falls Street, Falls Church, Virginia 22046. Publication Office—The Sheridan Press, Hanover, Pa. 17331. (Also see Notice on second following page.)

Copyright 1985 by the American Society for Photogrammetry and Remote Sensing. Reproduction of this issue or any part thereof (except short quotations for use in the preparation of technical and scientific papers) may be made only after obtaining the specific approval of the Editor.

The Society is not responsible for any statements made or opinions expressed in the technical papers, advertisements, or other portions of this Publication.

PHOTOGRAMMETRIC ENGINEERING & REMOTE SENSING



JOURNAL OF THE
AMERICAN SOCIETY FOR PHOTOGRAMMETRY AND REMOTE SENSING

Volume LI

April 1985

Number 4

- Algorithmic Aspects in On-Line Triangulation
Armin W. Gruen 419
- The World's Topographic and Cadastral
Mapping Operation
Arthur J. Brandenberger and Sanjib K. Ghosh 437
- Photogrammetry as a Tool for
National Development
O. O. Ayeni 445
- The Use of Landsat-4 MSS Digital Data in Temporal
Data Sets and the Evaluation of Scene-to-Scene
Registration Accuracy
James E. Anderson 457
- Leaf Reflectance-Nitrogen-Chlorophyll Relations
in Buffelgrass
*J. H. Everitt, A. J. Richardson, and
H. W. Gausman* 463
- Estimating Phytomass of Sagebrush Habitat Types
from Microdensitometer Data
*Laurence L. Strong, Robert W. Dana, and
Len H. Carpenter* 467
- Principle and Rotated Component Analysis of Urban
Surface Reflectances
B. C. Forster 475

(Continued on page 387)

MEMBERSHIP RATES: Membership in the American Society for Photogrammetry and Remote Sensing is open to any person actively engaged in the practice of Photogrammetry, Photointerpretation and Remote Sensing, or who by means of education or profession is interested in the application or development of these arts and sciences. The annual dues for Regular members are \$40.00 which includes a \$20.00 member subscription to the Society's official journal, *Photogrammetric Engineering and Remote Sensing*. The annual dues for accredited student members are \$45.00 which includes an \$8.00 student subscription to the official journal. (All memberships are on a calendar year basis.) Add \$5 for all international memberships to cover cost of postage. Postmaster: send address changes to the American Society for Photogrammetry and Remote Sensing, 210 Little Falls Street, Falls Church, Virginia 22046.

SUBSCRIPTION RATES: Persons or organizations that are not affiliated with the Society may obtain non-member subscriptions to *Photogrammetric Engineering and Remote Sensing* in accordance with the following schedule:

Non-member subscription . . . \$65.00 per year (calendar)

Add \$5 for international subscriptions.

Printed in the United States of America.

PERMISSION TO PHOTOCOPY

The appearance of the code at the bottom of the first page of an article in this journal indicates the copyright owner's consent that copies of the article may be made for personal or internal use or for the personal or internal use of specific clients. This consent is given on the condition, however, that the copier pay the stated per copy fee of \$2.25 through the Copyright Clearance Center, Inc., 21 Congress Street, Salem, MA 01970, for copying beyond that permitted by Sections 107 or 108 of the U.S. Copyright Law. This consent does not extend to other kinds of copying, such as copying for general distribution, for advertising or promotional purposes, for creating new collective works, or for resale.

NOTICE: Correspondence relating to all business and editorial matters pertaining to this and other Society publications should be directed to the American Society for Photogrammetry and Remote Sensing, 210 Little Falls Street, Falls Church, VA 22046, including inquiries, memberships, subscriptions, changes in address, manuscripts for publication, advertising, back issues, and the **MANUALS OF PHOTOGRAMMETRY AND REMOTE SENSING**. The telephone number of the Society Headquarters is (703) 534-6617.

| | |
|--|-----|
| NEWSLETTER | 484 |
| PROFESSIONAL PLACEMENT | 481 |
| ENGINEERING REPORTS | 488 |
| CALL FOR PAPERS: NINETEENTH INTERNATIONAL SYMPOSIUM ON REMOTE SENSING OF ENVIRONMENT | 444 |
| SHORT COURSES: CORNELL LABORATORY FOR ENVIRONMENTAL APPLICATIONS OF REMOTE SENSING | 444 |
| SHORT COURSE: OPTICAL SCIENCE AND ENGINEERING | 455 |
| ELEVENTH INTERNATIONAL SYMPOSIUM ON MACHINE PROCESSING OF REMOTELY SENSED DATA | 455 |
| 1985 ACSM-ASP FALL CONVENTION | 456 |
| 1985 ENGINEERING SUMMER CONFERENCES | 474 |
| SOCIETY AFFAIRS | |
| Officers of the Society | 389 |
| Sustaining Members | 393 |
| (House Ads and Backmatter) | 000 |
| JOURNAL AFFAIRS | |
| Permission to Photocopy | 387 |
| Index to Advertisers | 391 |
| Journal Staff | 391 |
| What <i>Photogrammetric Engineering and Remote Sensing</i> is | 391 |
| Forthcoming Articles | 436 |
| Instructions to Authors | 478 |