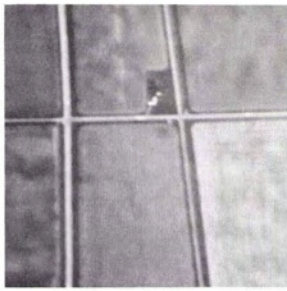


COVER PHOTO



COVER PHOTO — Sample frame of color infrared video imagery, as described in the article, "Design and Operation of a Color Infrared Aerial Video System," by Douglas E. Meisner and Orville M. Lindstrom (see pages 555-560).

PHOTOGRAMMETRIC ENGINEERING & REMOTE SENSING



JOURNAL OF THE
AMERICAN SOCIETY FOR PHOTOGRAMMETRY AND REMOTE SENSING

Volume LI May 1985 Number 5

What is a Near-Vertical Photograph?
Ward W. Carson 533

Close-Range Photogrammetry: Where Are We and
Where Are We Heading?
H. M. Karara 537

A Photogrammetric Vision System for Robots
S. F. El-Hakim 545

Design and Operation of a Color Infrared Aerial
Video System
*Douglas E. Meisner and Orville M.
Lindstrom* 555

Detection of Leaks in Buried Rural Water Pipelines
Using Thermal Infrared Images
J. C. Eidenshink 561

The Use of Thermal Infrared Imagery in Surface
Current Analysis of a Small Lake
*Ellsworth F. LeDrew and Steven E.
Franklin* 565

A Comparative Analysis of Polygon to Raster
Interpolation Methods
Keith C. Clarke 575

Reducing Landsat MSS Scene Variability
Ross Nelson 583

Second-class postage paid at Falls Church, Virginia and at additional mailing offices.

Photogrammetric Engineering and Remote Sensing (ISSN 0099-1112) is published monthly by the American Society for Photogrammetry and Remote Sensing, 210 Little Falls Street, Falls Church, Virginia 22046. Publication Office—The Sheridan Press, Hanover, Pa. 17331. (Also see Notice on second following page.)

Copyright 1985 by the American Society for Photogrammetry and Remote Sensing. Reproduction of this issue or any part thereof (except short quotations for use in the preparation of technical and scientific papers) may be made only after obtaining the specific approval of the Editor.

The Society is not responsible for any statements made or opinions expressed in the technical papers, advertisements, or other portions of this Publication.

(Continued on page 499)

MEMBERSHIP RATES: Membership in the American Society for Photogrammetry and Remote Sensing is open to any person actively engaged in the practice of Photogrammetry, Photointerpretation, and Remote Sensing, or who by means of education or profession is interested in the application or development of these arts and sciences. The annual dues for Regular members are \$40.00 which includes a \$20.00 member subscription to the Society's official journal, *Photogrammetric Engineering and Remote Sensing*. The annual dues for accredited student members are \$15.00 which includes an \$8.00 student subscription to the official journal. (All memberships are on a calendar year basis.) Add \$5 for all international memberships to cover cost of postage. Postmaster: send address changes to the American Society for Photogrammetry and Remote Sensing, 210 Little Falls Street, Falls Church, Virginia 22046.

SUBSCRIPTION RATES: Persons or organizations that are not affiliated with the Society may obtain non-member subscriptions to *Photogrammetric Engineering and Remote Sensing* in accordance with the following schedule:

Non-member subscription . . . \$65.00 per year (calendar)

Add \$5 for international subscriptions.

Printed in the United States of America.

PERMISSION TO PHOTOCOPY

The appearance of the code at the bottom of the first page of an article in this journal indicates the copyright owner's consent that copies of the article may be made for personal or internal use or for the personal or internal use of specific clients. This consent is given on the condition, however, that the copier pay the stated per copy fee of \$2.25 through the Copyright Clearance Center, Inc., 21 Congress Street, Salem, MA 01970, for copying beyond that permitted by Sections 107 or 108 of the U.S. Copyright Law. This consent does not extend to other kinds of copying, such as copying for general distribution, for advertising or promotional purposes, for creating new collective works, or for resale.

NOTICE: Correspondence relating to all business and editorial matters pertaining to this and other Society publications should be directed to the American Society for Photogrammetry and Remote Sensing, 210 Little Falls Street, Falls Church, VA 22046, including inquiries, memberships, subscriptions, changes in address, manuscripts for publication, advertising, back issues, and the **MANUALS OF PHOTOGRAMMETRY AND REMOTE SENSING**. The telephone number of the Society Headquarters is (703) 534-6617.

(Continued from page 497)

| | |
|---|-----|
| NEWSLETTER | 595 |
| ENGINEERING REPORTS | 606 |
| PROFESSIONAL PLACEMENT | 604 |
| BOOK REVIEW: <i>Computer Mapping, Progress in the 80's</i> | 553 |
| 1985 ACSM-ASP FALL CONVENTION | 554 |
| COLLOQUIUM ON SURVEYING AND MAPPING | |
| EDUCATION | 560 |
| 40th PHOTOGRAMMETRIC WEEK | 564 |
| INTERNATIONAL REMOTE SENSING WORKSHOP | 574 |
| SECOND INTERNATIONAL SYMPOSIUM, THE STABILITY AND PRESERVATION OF PHOTOGRAPHIC IMAGES | 574 |
| 1985 ENGINEERING SUMMER CONFERENCES | 582 |
| PECORA-10 SYMPOSIUM | 603 |
| | |
| SOCIETY AFFAIRS | |
| Officers of the Society | 501 |
| Reduced Prices for Members | 504 |
| Sustaining Members | 505 |
| The Latest Technique | 528 |
| New Sustaining Member, <i>Williams-Stackhouse Inc.</i> | 544 |
| New Sustaining Member, <i>Satellite Hydrology Associates</i> | 552 |
| Word with the Executive Director | 611 |
| ASPRS Publications | 614 |
| | |
| JOURNAL AFFAIRS | |
| Permission to Photocopy | 499 |
| Index to Advertisers | 503 |
| Journal Staff | 503 |
| What <i>Photogrammetric Engineering and Remote Sensing</i> is | 503 |
| Forthcoming Articles | 573 |
| Instructions to Authors | 594 |